

Mounting Instructions



Designed by Luxaflex®. Inspired by you.

- Roller Blinds
- Rolgordijnen
- Stores Rouleaux
- Rollos
- Estores Enrollables
- Rullegardiner
- Rullo
- Rullegardiner
- Estores de Rolo
- Rullgardiner
- Stor Perde
- Rullakaihtimen

Mounting Instructions

English	It is very important to follow these installation and operating instructions exactly. We cannot accept any responsibility for problems arising out of a failure to follow the installation and operating instructions.
Nederlands	Het is van belang dat u onderstaande montage- en bedieningsinstructies nauwgezet uitvoert. Wij aanvaarden geen verantwoordelijkheid voor het niet of verkeerd opvolgen van de montage- en bedieningsinstructies.
Français	Il est important de suivre minutieusement les instructions de montage et d'emploi ci-contre. Nous n'assumons aucune responsabilité si les instructions de montage et d'emploi ne sont pas suivies ou si elles sont mal suivies.
Deutsch	Bitte lesen Sie die nachstehenden Montage- und Bedienungshinweise sorgfältig durch. Wir übernehmen keine Haftung für den Fall, dass nicht korrekt nach den Montage- und Bedienungshinweisen gehandelt wurde.
Español	Es muy importante seguir rigurosamente las instrucciones de montaje y conservación. No se asumirá ninguna responsabilidad en caso de no seguir las instrucciones correctamente.
Dansk	Det er meget vigtigt, at De følger monterings- og brugsanvisningen nøje. Vi kan ikke påtage os noget ansvar for problemer, som følger af at monterings- og brugsanvisningen ikke er fulgt eller ikke er fulgt korrekt.
Italiano	E' importante seguire scrupolosamente le seguenti istruzioni di installazione ed uso. Non si assumono responsabilità per danni derivanti dalla non osservanza o da errata interpretazione delle stesse.
Norsk	Det er svært viktig at disse installasjons- og brukerveiledningene følges nøye. Vi tar ikke på oss ansvar for problemer som følge av at disse installasjons- og brukerveiledningene ikke er fulgt.
Português	É muito importante que siga rigorosamente estas instruções de montagem e de utilização. Não assumimos qualquer responsabilidade por problemas resultantes do incumprimento das instruções de montagem e de utilização.
Svenska	Det är mycket viktigt att du följer denna monterings- och bruksanvisning noga. Vi kan inte påta oss något ansvar för problem som uppkommer ur underlåtenhet att följa monterings- och bruksanvisningen.
Türkçe	Bu kurulum ve işletim talimatlarına harfiyen uymak çok önemlidir. Kurulum ve işletme talimatlarına uymamaktan kaynaklanan sorunlar için sorumluluk kabul edemiyoruz.
Suomi	On erittäin tärkeää seurata tarkasti näitä asennus- ja käyttöohjeita. Emme voi ottaa vastuuta ongelmista, jotka aiheutuvat puutteellisesta asennus- ja käyttöohjeiden seuraamisesta.

Guarantee

Dear Customer,

We thank you for choosing Luxaflex® products.

In the unlikely event that the Luxaflex® product guarantee service is needed, please contact the dealer from whom the product was purchased. Alternatively you may contact a member of our authorised Luxaflex® service network. In order to minimise any unnecessary inconvenience, we suggest that the product installation instructions are read carefully before contacting the dealer on our service network.

GUARANTEE

Luxaflex® guarantees that all Luxaflex® window covering products are free from material and assembly defects, provided that such products were properly installed in a domestic situation.

For non-domestic installations, refer to the Luxaflex® general sales conditions. The obligation of Luxaflex® is limited to repair or replacement of the defective materials or components.

Repairs will be made with like or similar parts. The guarantee is limited to the original purchaser.

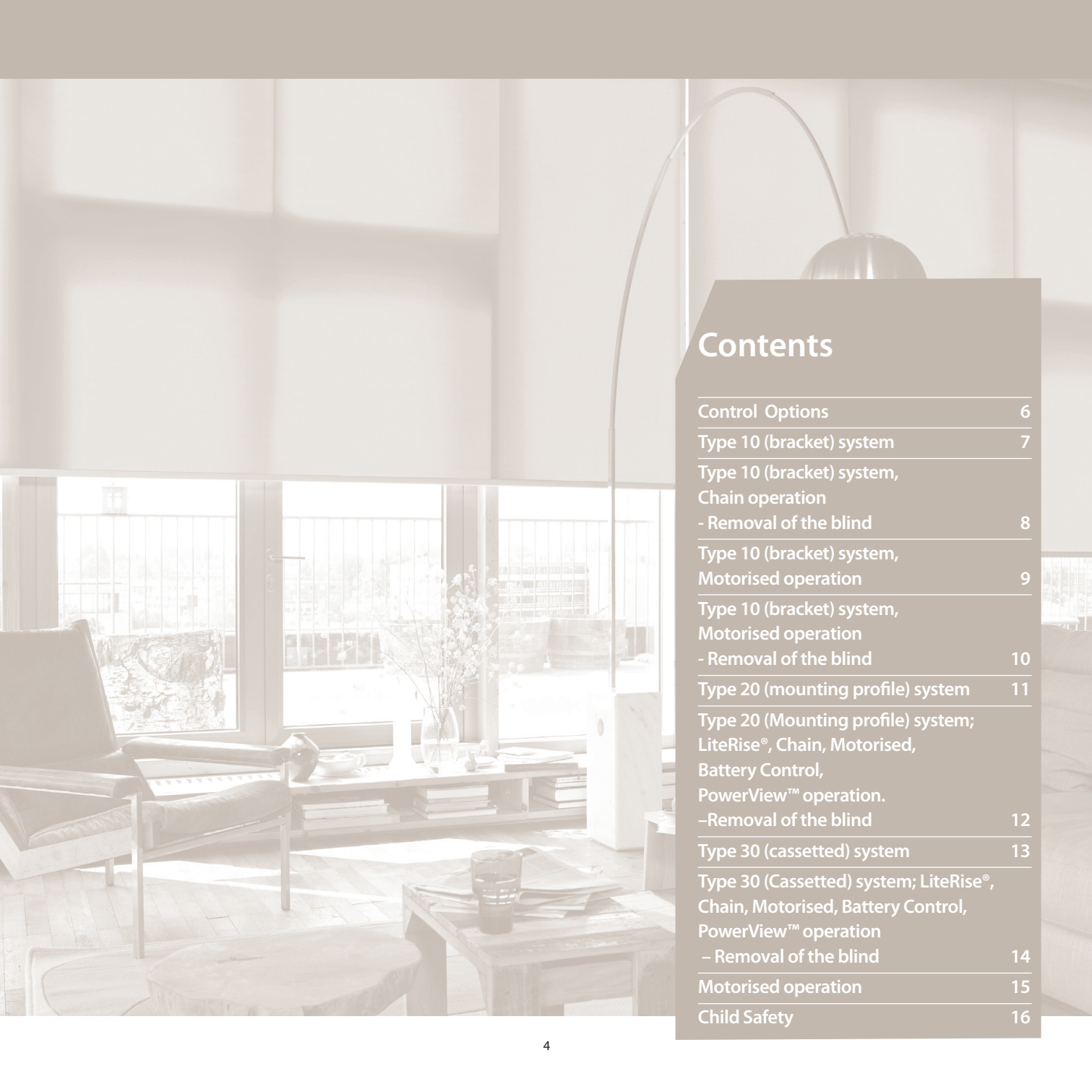
Scope of warranty	Year since date of purchase				
	1 yr	2 yrs	3 yrs	4 yrs	5 yrs
Removal of product from end user's window	X	X	X	X	X
Carriage (to - from factory)	✓	X	X	X	X
Labour (assembly / repair)	✓	X	X	X	X
Re-installation of product at end users window	X	X	X	X	X
Components (with like or similar parts)	✓	✓	✓	✓	✓
Cords	✓	✓	✓	X	X
Fabric (with like or similar fabric)	✓	✓	✓	X	X
Consequential loss	X	X	X	X	X

This guarantee is invalid if the damage or failure is caused by:

• Accident • Misuse/Abuse • Alteration • Motorised devices • Exposure to elements • Normal wear and tear • Blinds that are not fitted in a domestic situation • Failure to follow measurement, installation, cleaning and maintenance instructions

The guarantee is exclusive and in lieu of all other obligations, liabilities or warranties. In no event shall Luxaflex® be liable or responsible for incidental or consequential damages or for any other direct or indirect damage, loss, cost, expense or fee.

The guarantee does not affect the consumers statutory rights under applicable national laws in force, nor the consumers rights against the dealer arising from their sales/purchase contract.



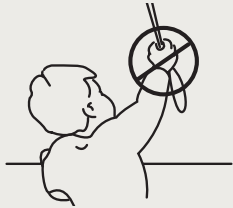
Contents

Control Options	6
Type 10 (bracket) system	7
Type 10 (bracket) system, Chain operation	
- Removal of the blind	8
Type 10 (bracket) system, Motorised operation	9
Type 10 (bracket) system, Motorised operation	
- Removal of the blind	10
Type 20 (mounting profile) system	11
Type 20 (Mounting profile) system; LiteRise®, Chain, Motorised, Battery Control, PowerView™ operation.	
-Removal of the blind	12
Type 30 (cassetted) system	13
Type 30 (Cassetted) system; LiteRise®, Chain, Motorised, Battery Control, PowerView™ operation	
- Removal of the blind	14
Motorised operation	15
Child Safety	16



Control options

⚠ WARNING



- Young children can be strangled by the loops in pull cords, chains, tapes and inner cords that operate the product.
- To avoid strangulation and entanglement, keep cords out of the reach of young children. Cords may become wrapped around a child's neck.
- Move beds, cots and furniture away from window covering cords.
- Do not tie cords together. Make sure cords do not twist and create a loop.

Persons in charge of young children are ultimately responsible for following the safety instructions provided by the manufacturer and to use any safety device supplied.



**make it
safe**

Luxaflex® is a member of the 'make it safe' campaign – the British Blind and Shutter Association's national campaign to promote window blind cord safety. For more info see: www.makeitsafe.org.uk

LiteRise® operation

LiteRise® operation is the standard control operation for Luxaflex® Roller blinds. As LiteRise® is inherently child safe no safety devices are required.

Chain operation

1) Safety chain breaks

This breakaway chain connector is pre-installed in the operating chain and is designed to safely split the chain apart if a reasonable force is applied to the loop.

If the safety connector does break apart, check to ensure it is not damaged before reconnecting.

Note! Care should be taken when raising and lowering the blind to avoid the connector breaking apart accidentally. Pulling sharply on the control chain or raising the blind by pulling below the safety breaks may result in accidental breakage.

2) Safety Clip

This device is used to prevent the control chain from forming a hazardous loop and must be fitted if supplied with this product.

- (i) **Positioning:** The safety clip shall be installed at the maximum distance possible from the control mechanism to prevent the looped cord/chain from becoming slack. Place the chain loop inside the safety clip. Take up any slack and check to ensure that the chain is under tension. Do not apply excessive tension as this may affect the operation of the product. Mark the fixing hole at this position.

(ii) Fitting:

Solid Plaster Walls:

Drill a 5.5mm hole and insert the wall plug provided before screwing into this.

Wood Fixing:

Drill a 2mm pilot hole and use the screw provided, screwing directly into the wood.

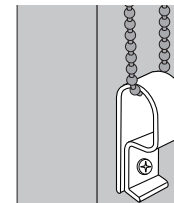
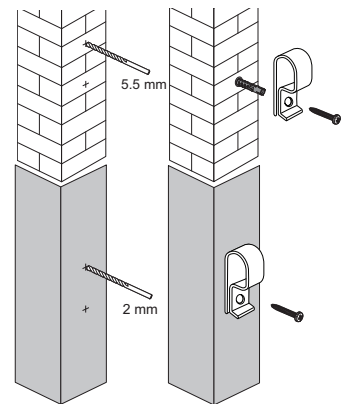
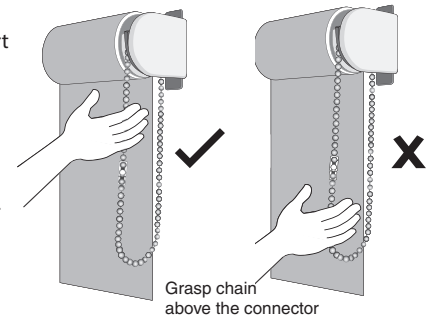
All other surfaces:

(Hollow plaster board, UPVC, Metal etc) special fixings are required for these surfaces (not supplied). You will need to purchase these separately from a DIY store.

Check that the chain is under continuous tension.



Important! Ensure the safety clip has been fitted to a sound and secure surface.





Type 10 (bracket) system

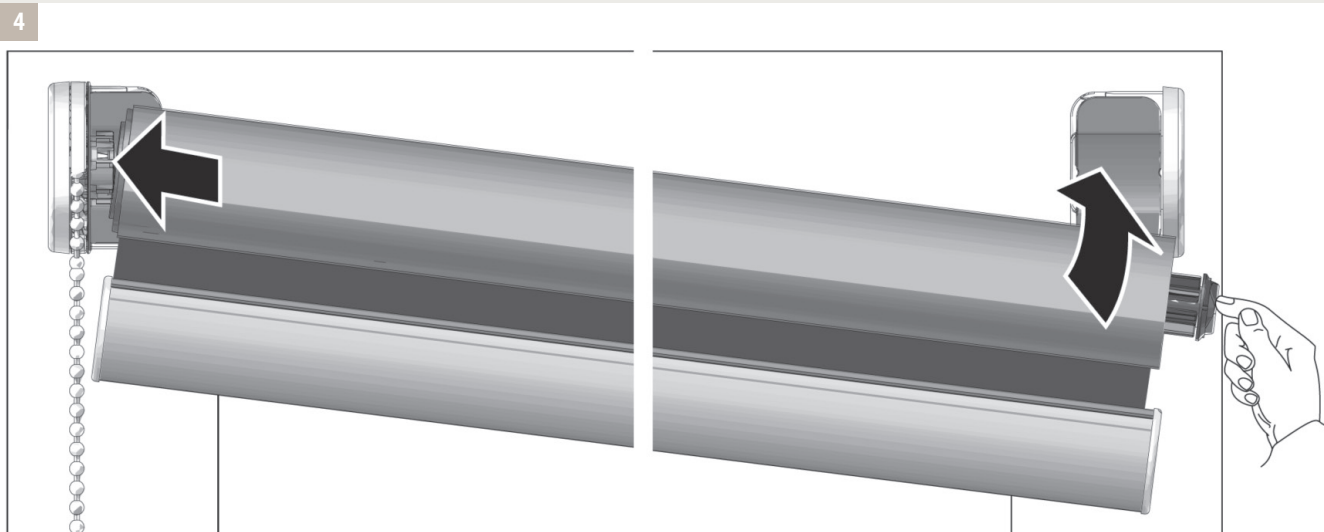
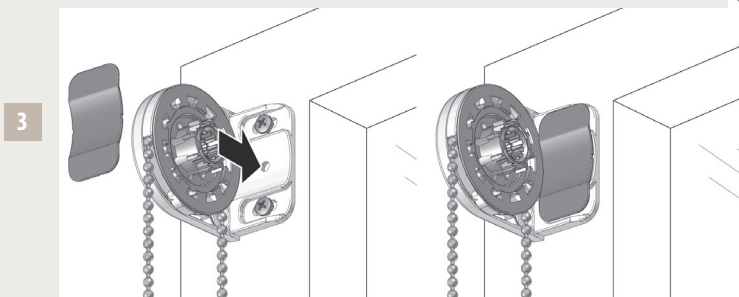
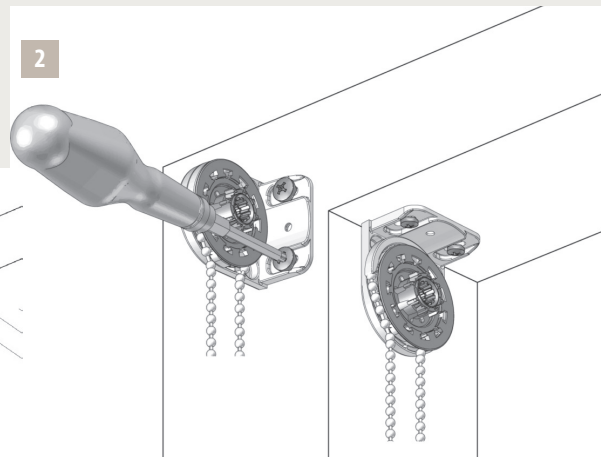
Chain Operation

Brackets can be installed either Top or Face Fixed.

When receiving your chain operated Luxaflex® Roller blind, you will discover the blind and control unit will be separate.

Firstly install both the bracket and control unit bracket then insert the tube into the fitted Control Chain side first the push the plunger in and move blind up into the bracket.

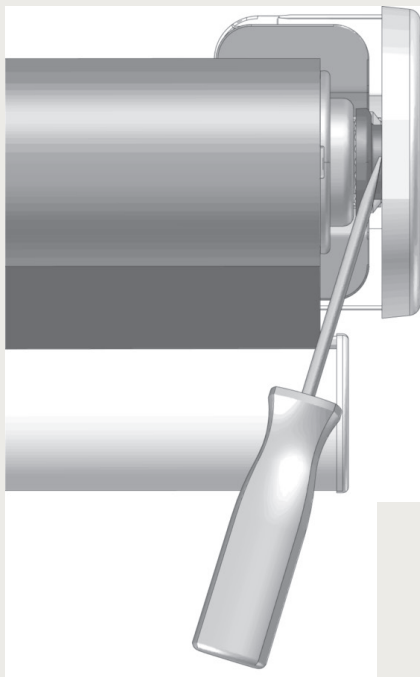
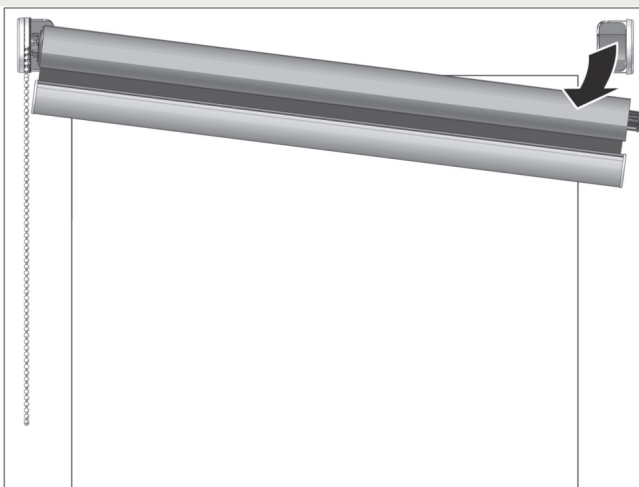
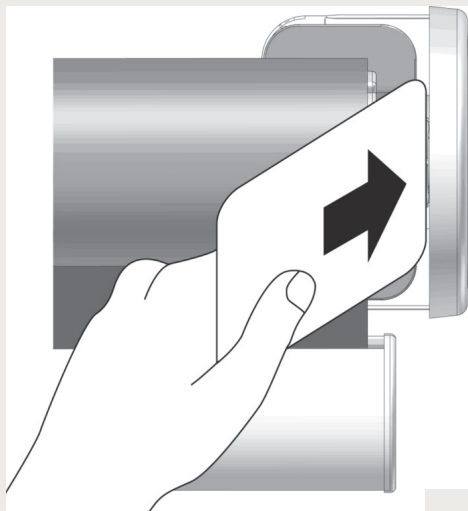
After the blind has been installed the chain should run vertically and parallel. If this is not the case the control mechanism can be altered, please see Luxaflex.co.uk for more information.





Type 10 (bracket) system, Chain operation – Removal of the blind

When removing a type 10 roller blind please ensure the correct method is used, as per the below images.





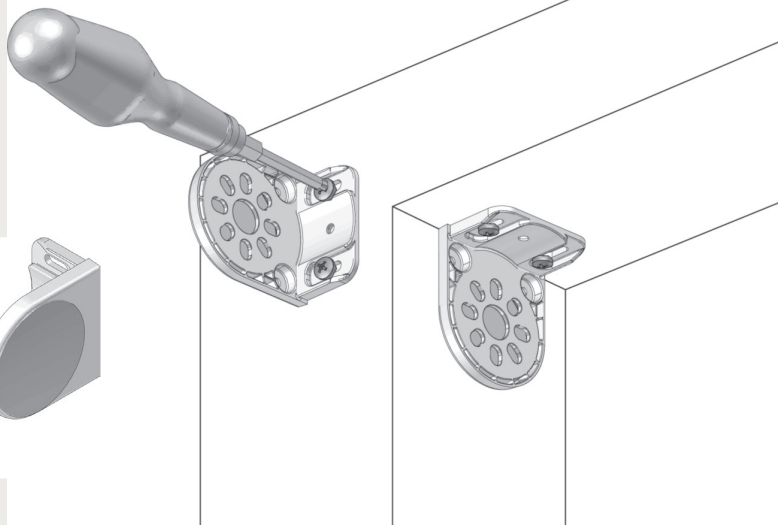
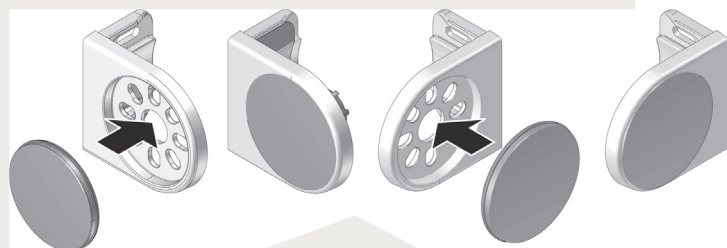
Type 10 (bracket) system

Motorised operation

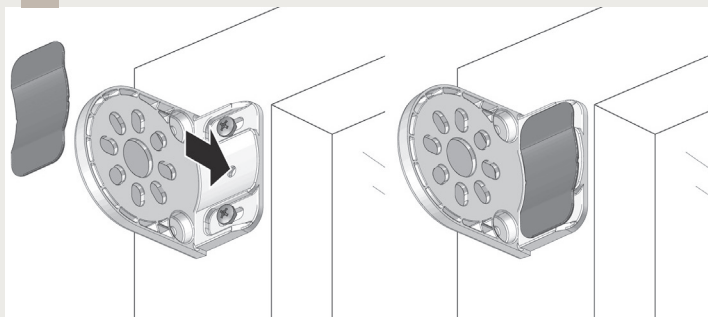
Brackets can be installed either Top or Face Fixed.

2

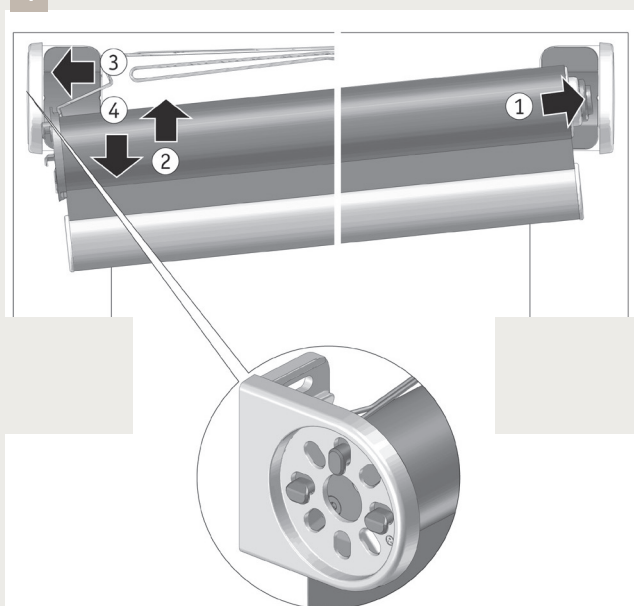
1



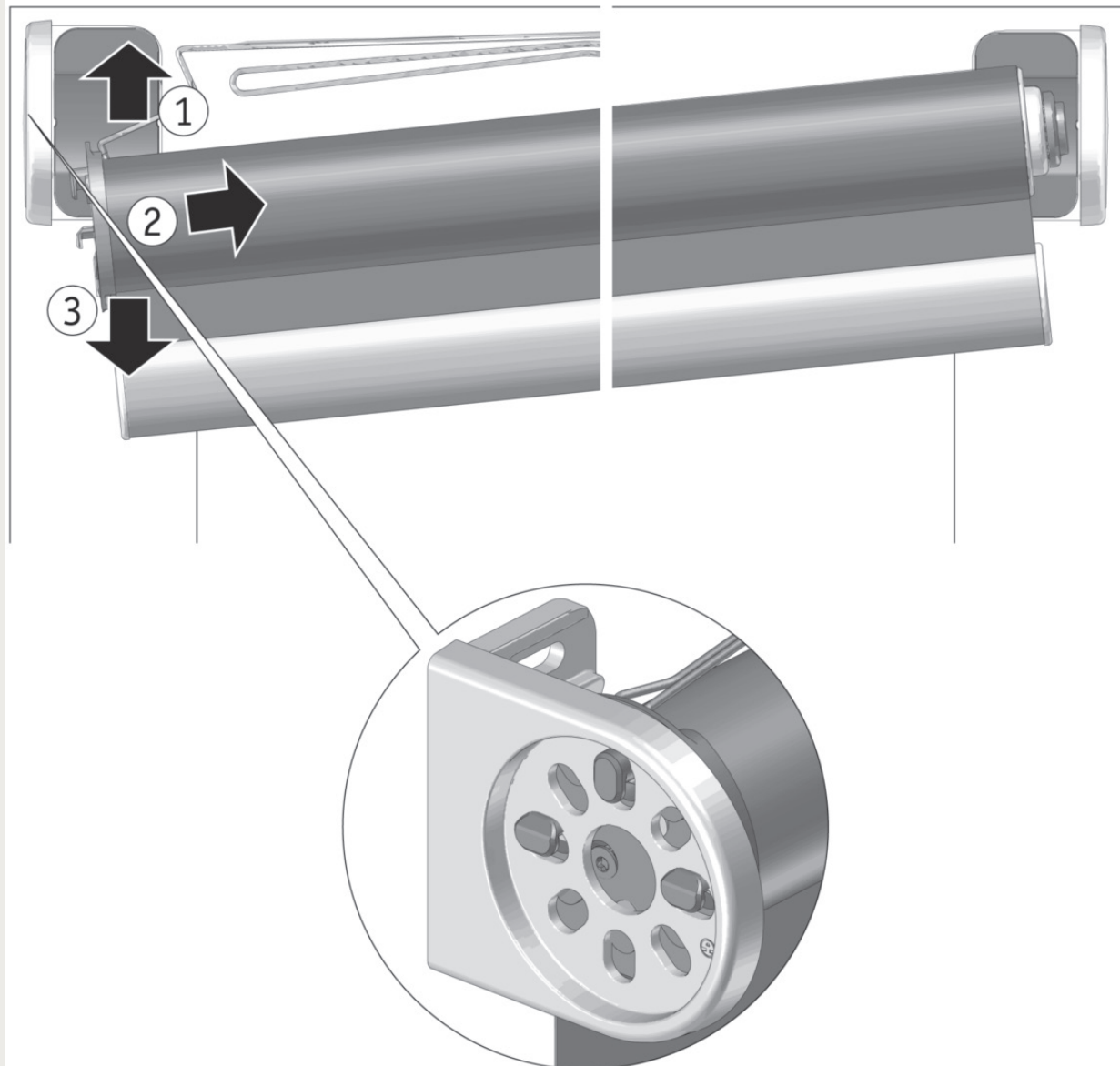
3

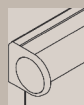


4

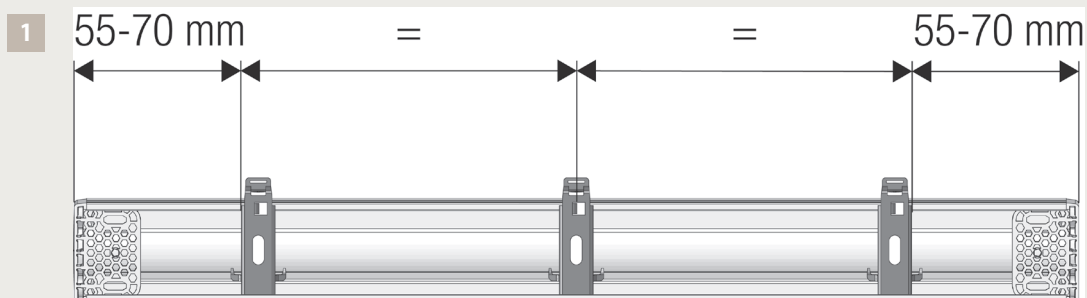


Type 10 (bracket) system, Motorised operation – Removal of the blind





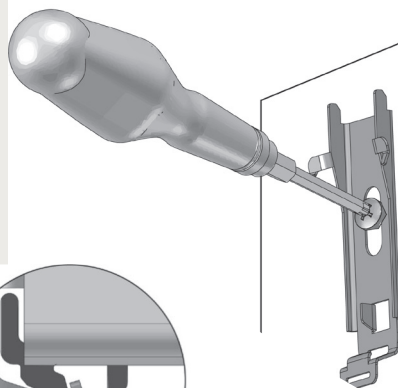
Type 20 (mounting profile) system



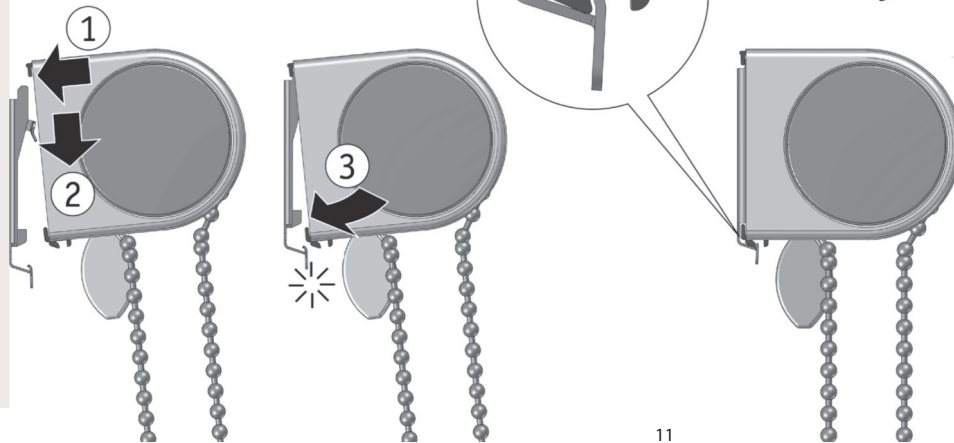
LiteRise®, Chain Operation, Motorised, Battery Control and PowerView™

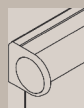
Brackets can be either Top or Face Fixed.
The bracket needs to be fitted close to the operation end (ideally 55 – 70mm from end)
Insert back plate at top first then push down to secure.
The profile will 'click' when in position.

2

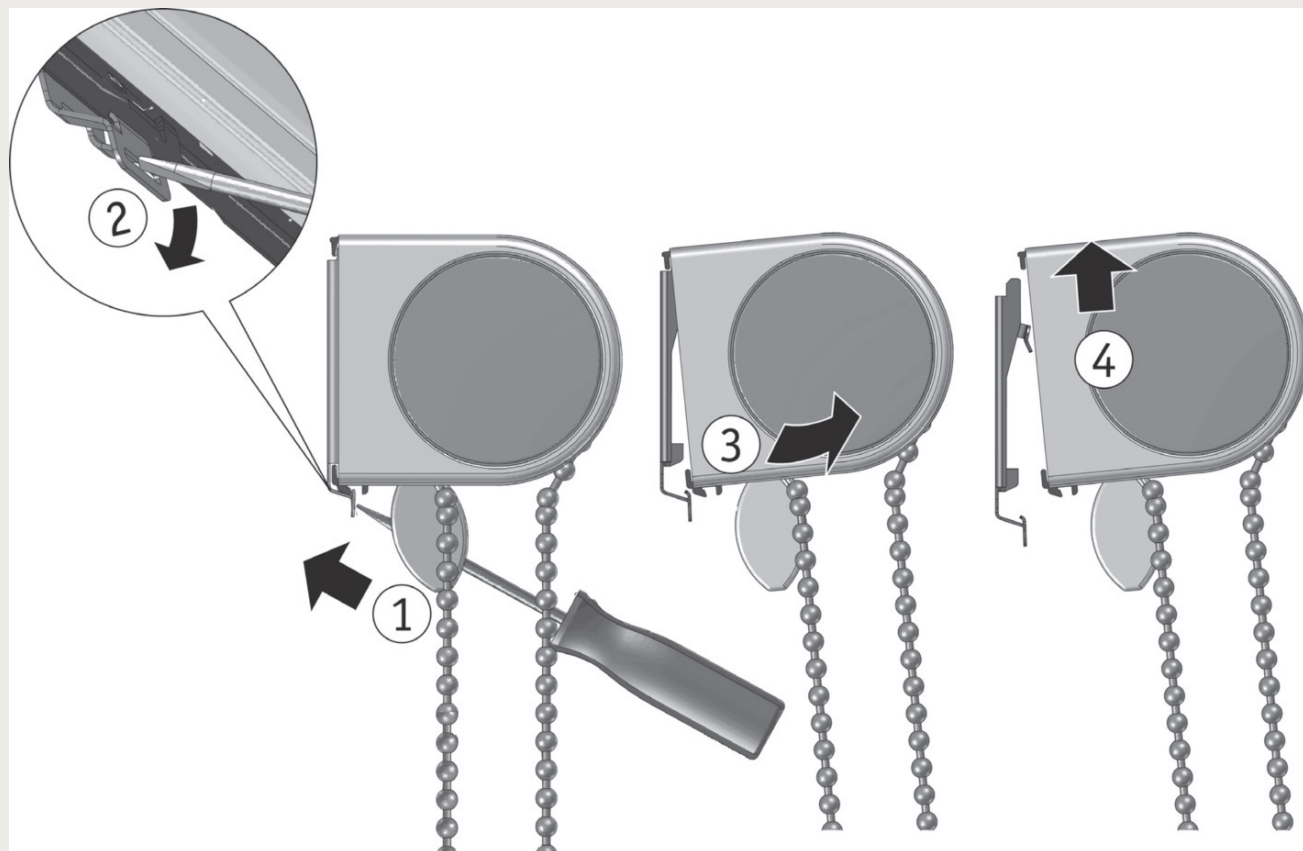


3





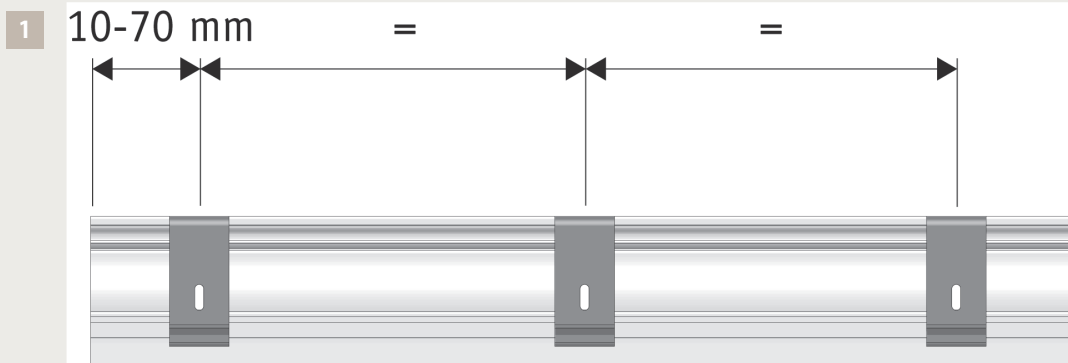
Type 20 (Mounting profile) system; LiteRise®, Chain, Motorised, Battery Control, PowerView™ operation.– Removal of the blind



Insert a Flat blade screw driver into the lip on the bracket, and push away from the mounting plate. Then remove the blind.



Type 30 (cassette) system



LiteRise®, Chain Operation, Motorised, Battery Control and PowerView™

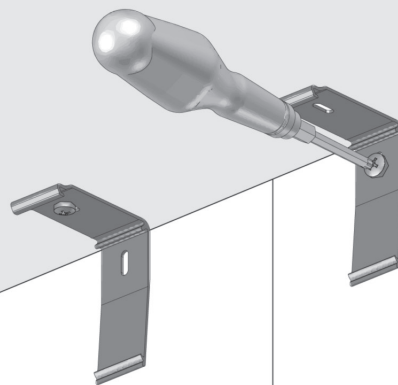
Bracket can be either Top or Face Fixed.

The bracket needs to be fitted close to the operation end (ideally 10 – 70mm from end)

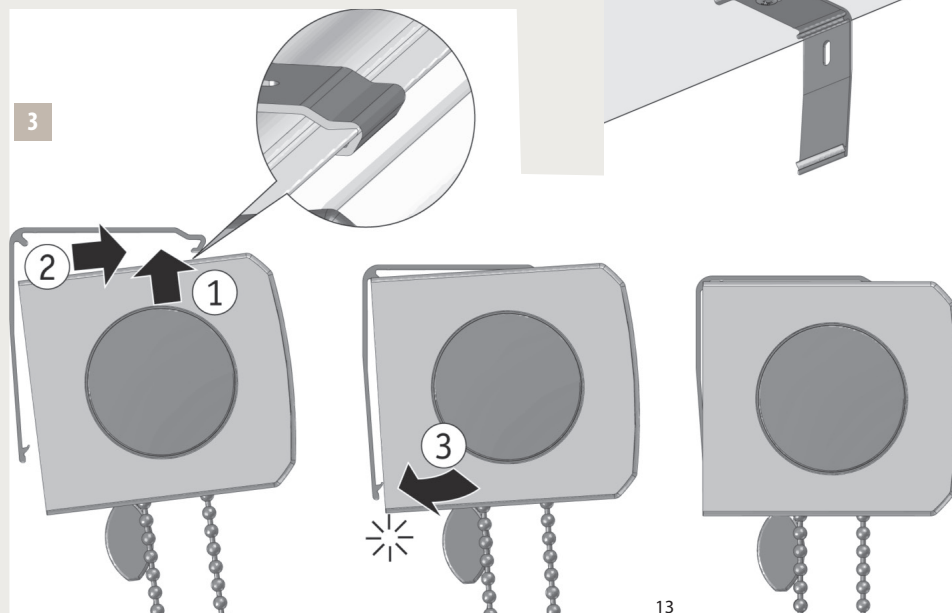
Insert back plate at top first then push down to secure.

The profile will 'click' when in position.

2

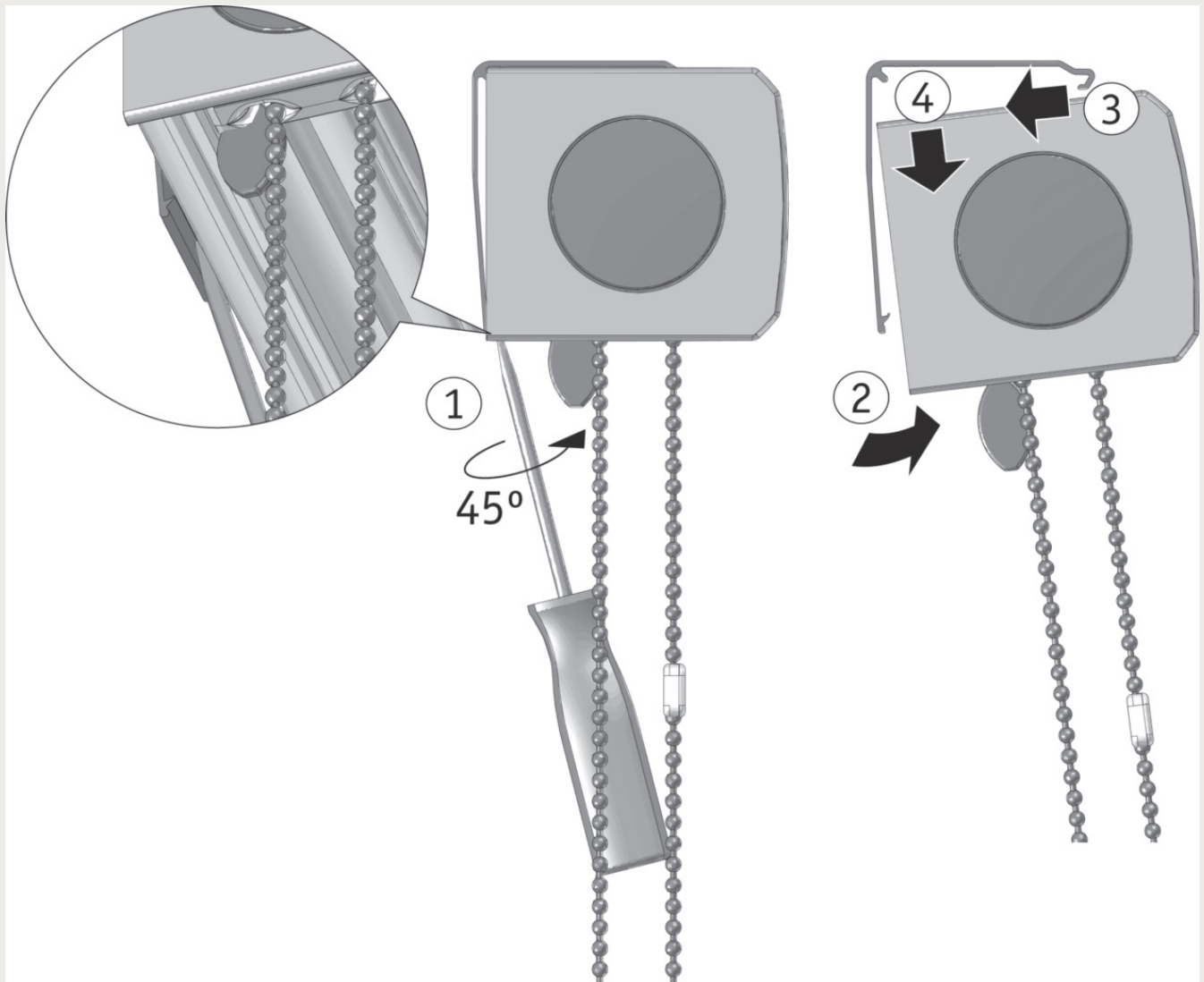


3



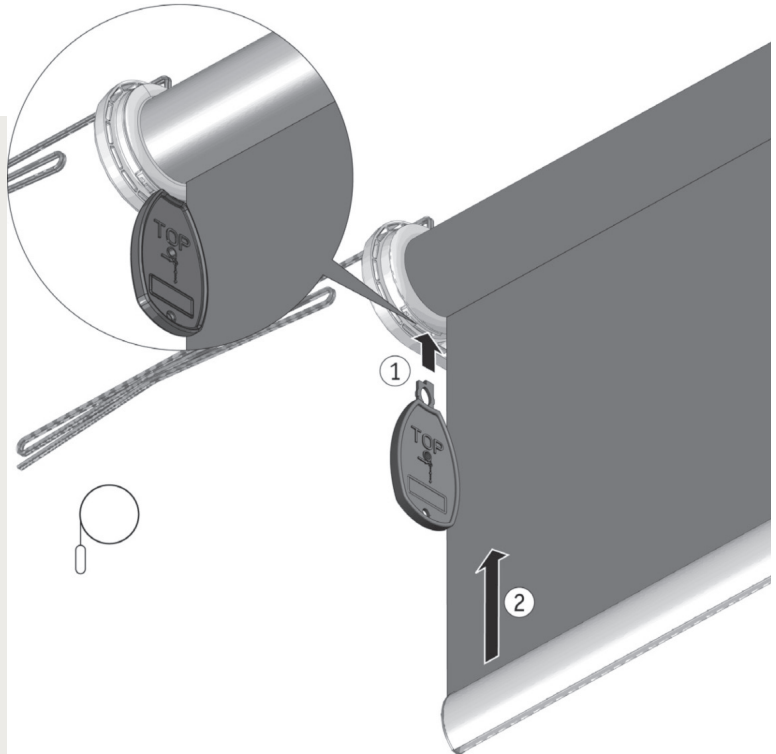
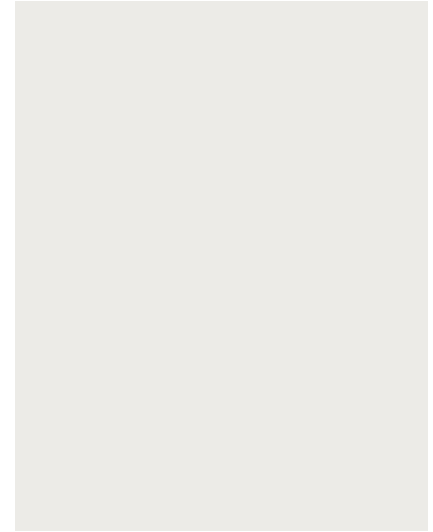
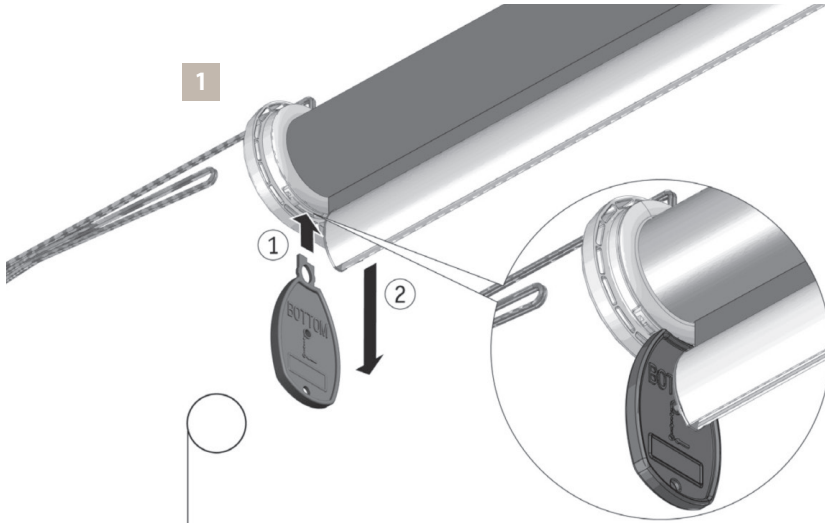


Type 30 (Cassette) system; LiteRise®, Chain, Motorised, Battery Control, PowerView™ operation.– Removal of the blind



Insert a Flat blade screw driver into the lip on the bracket, and twist 45° in an anticlockwise direction. Then remove the blind.

Motorised operation



The limits are preset in the Factory.

If you need to adjust these, use the 'Green' key provided, and insert in to the motor.

The blind will move either down or up – depending on which way the key is inserted. Once the blind is at the desired drop remove the key.

Notes: