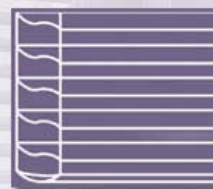


Installation and Operating Instructions

Luxaflex® Silhouette® Shade



UK

STANDARD INSTALLATION

General information

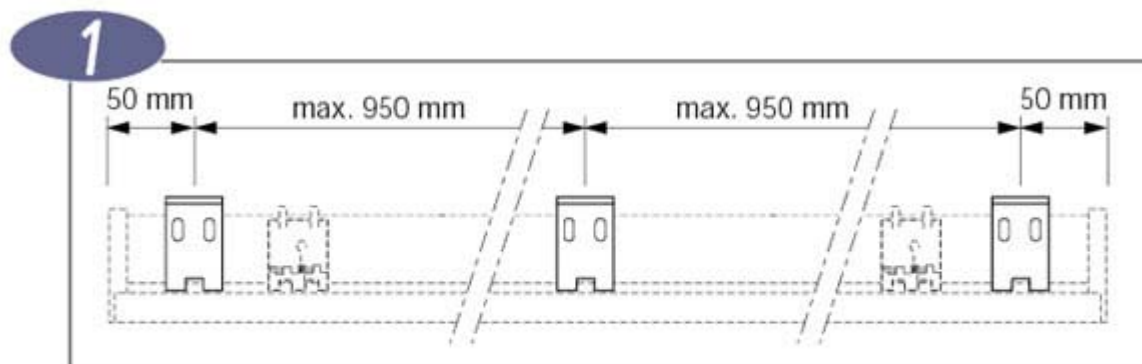
It is very important to follow these installation and operating instructions exactly. We cannot accept any responsibility for problems arising out of a failure to follow the installation and operating instructions.

As in all fabrics, there may be slight irregularities in the fabrics used in Silhouette® shades. Minor folds, wrinkles and other slight irregularities are not unusual in this product and should be considered as normal, acceptable quality. Tests have proved that these small variations are not detrimental to the product in any way.

1. Fixing position

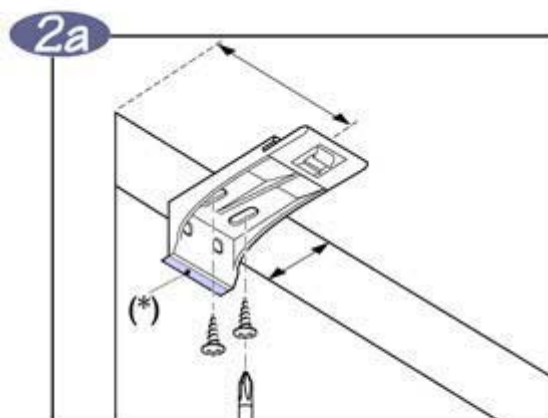
First mark the positions you wish to install the brackets, making sure to avoid the limit stops in the headrail. The maximum distance between brackets should be 950 mm. The brackets should be equally spaced across the width and level. Check this with a spirit level! Make sure the blind will clear any obstructions such as window handles etc.

The fixing bracket has a lip(*) at the bottom to prevent dust from gathering on the bracket. Do not remove this unless necessary (i.e. when face fixing on a flat wall).



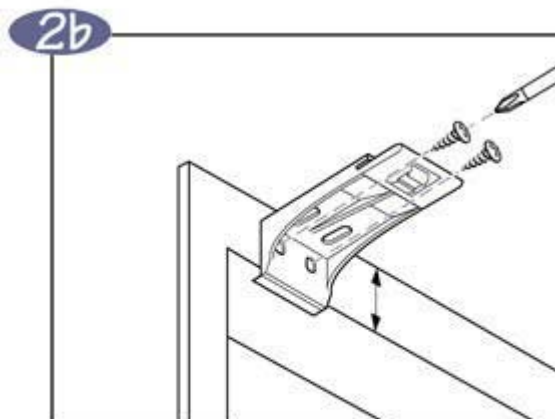
2a. Installing in recess

Fix the brackets with the top against the frame, the coving or the ceiling as shown.



2b. Installing on face

Fix the brackets with the back against the frame or the wall as shown. Remove the lip at the bottom of the bracket if it is preventing the bracket from sitting at a right angle to the wall.

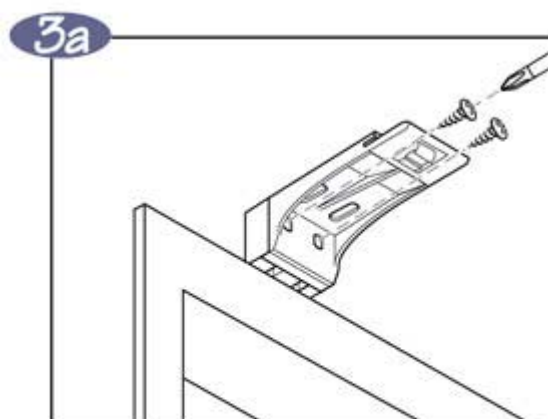


INSTALLATION OPTIONS

3a. Spacer blocks (optional)

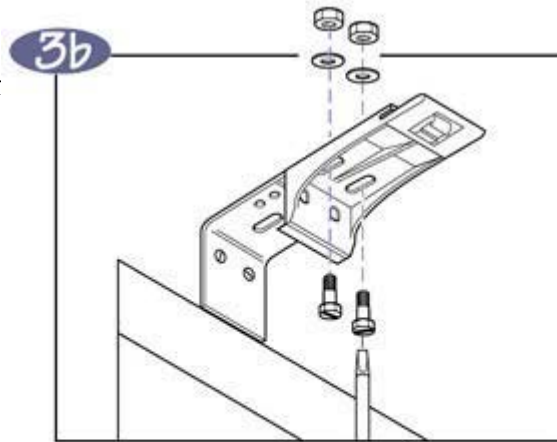
If the shades are being face fitted to the wall, a maximum of three spacer blocks, each giving 12.5 mm spacing, can be used to increase the clearance to the window.

Appropriate length screws will need to be obtained.



3b. Extension brackets (optional)

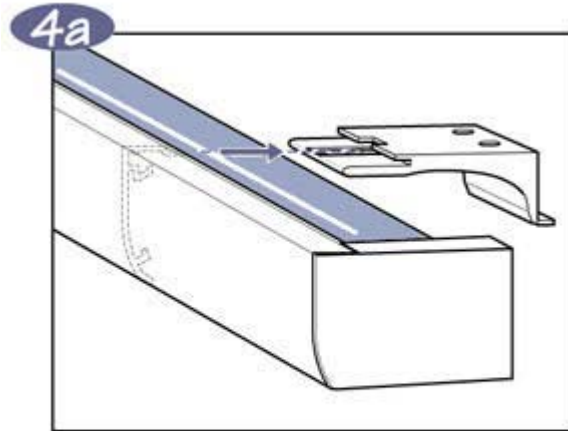
Where larger clearance is required, extension brackets can be used in conjunction with standard brackets to give a clearance of up to 76 mm from the window. The fixing positions and levels should all be as for standard face fitting.



INSTALLATION

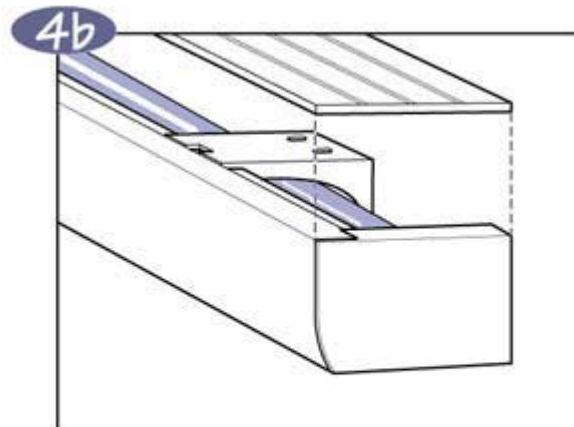
4a. Headrail

With the front of the headrail facing you, push the headrail back onto the bracket until 'clicks' securely home.



4b. Cover strip

If the headrail is visible beyond the window frame, the protruding section can be protected by fitting the cover strip supplied.

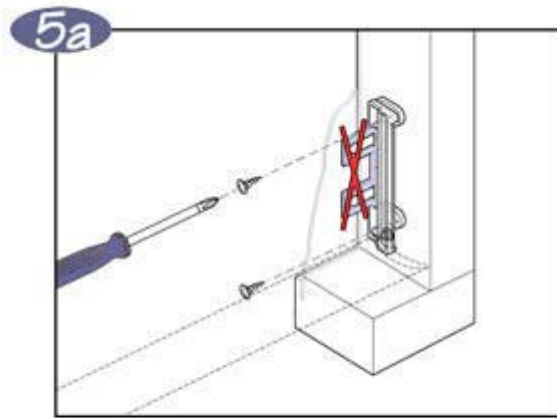


Hold down brackets (optional)

These brackets will hold the bottom rail in a fixed position. The bottom rail must be released from the hold down brackets before the shade is raised.

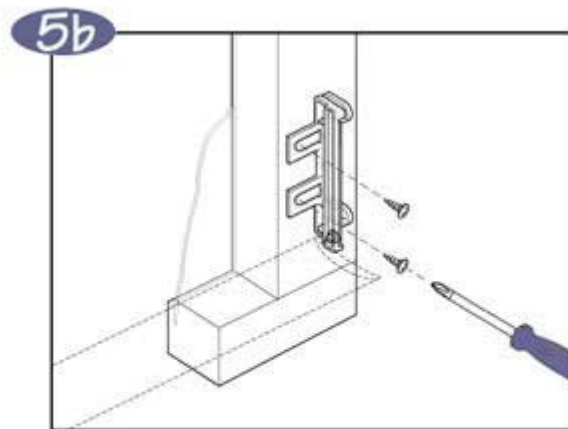
5a. In recess

Remove the protruding lips from the brackets on the non operating side. Fit with screws through the sides of the brackets, at the appropriate position when the shade is lowered.



5b. On face

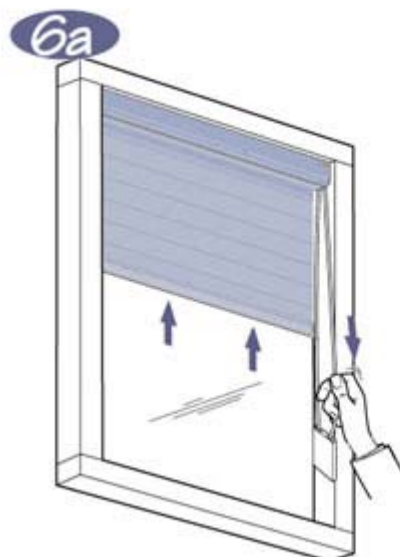
Remove the protruding lips from the brackets on the non operating side. Fit with screws through the back of the brackets, at the appropriate position when the shade is lowered.



OPERATION

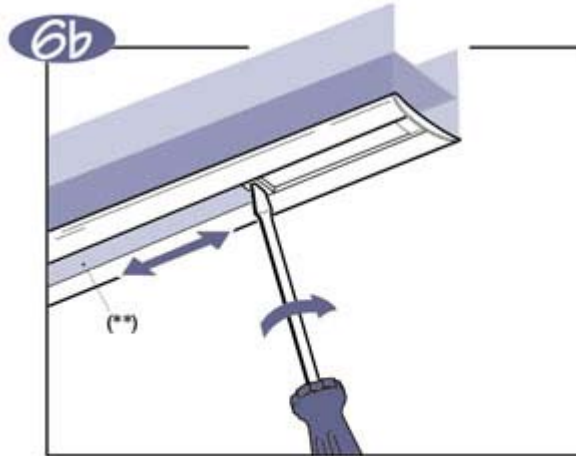
6a. Lowering and raising

Pull down on the back of the cord loop to lower the shade and open the vanes. Pull down on the front of the cord loop to close the vanes and raise the shade.



6b. Adjusting

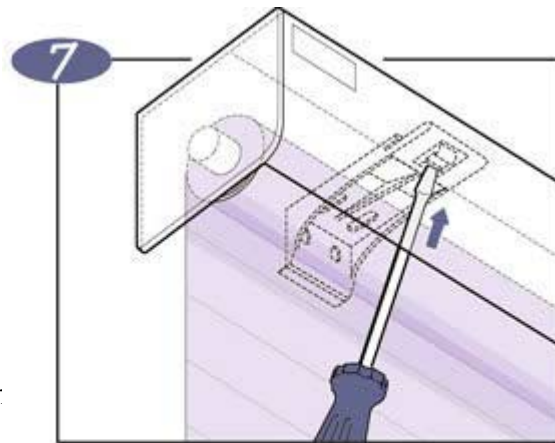
Lower the shade fully and allow it to hang for approximately 1 minute. Raise the shade slowly. If the fabric starts to roll to one side and the fabric bunches, stop raising the shade immediately. Lower the shade releasing the fastening clips and sliding the bottom rail weight towards the side the fabric was gathering, in 25 mm steps. Repeat this until the shade rolls up correctly.



REMOVAL

7. Headrail

From the front of the headrail, carefully insert a screwdriver between the fabric and the edge of the headrail and into the slot in the installation bracket. It may be necessary to lower the shade slightly in order to do this. Then push the screwdriver upwards and twist it to disengage the locking tab. Raise the shade carefully and remove the headrail from the brackets.



CLEANING

Regular dusting with a feather duster or a vacuum cleaner at the LOWEST setting will usually be enough to keep the Silhouette® shade clean. Ingrained dirt and most stains can be removed by immersing the shade in a bath of water with a mild (non-synthetic) soap powder. Caution: do not get the headrail wet! Rinse thoroughly with clean water and leave to dry in the fully lowered position with the vanes closed. Do not iron the Silhouette® shade!

The Silhouette® shade can also be cleaned by professional cleaners (using ultrasound), with the exception of the 'Bon Soir' fabric. Contact your supplier about cleaning this fabric.

These recommendations have been compiled with great care. Nevertheless we can accept no responsibility for the results of cleaning.