

ROLLER BLINDS

Spring-loaded with
Autostop[®] Decelerating Action

Fixing & Operation Instructions

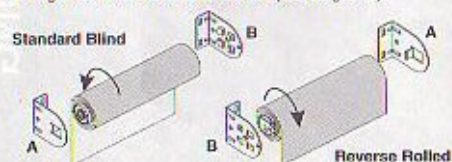
Faber

FIXING

FIXING

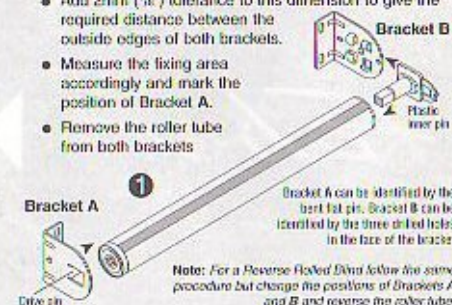
Faber blinds are designed for easy DIY fixing using a tape measure, drill and screwdriver. However, it is important to measure the position of the brackets accurately and ensure they are fitted level. The universal brackets supplied can be fitted in 3 different ways (e.g. face fixing, top fixing and end fixing). Wall plugs (not supplied) will be required if not fixing into wood.

Unless otherwise specified, Faber blinds are supplied with the fabric unrolling from the back of the roller. The following instructions are therefore based on this. If you have ordered a blind with the fabric unrolling from the front of the roller (reverse rolled), the drive bracket A must always be fitted on the right hand side instead of the left (see diagrams).

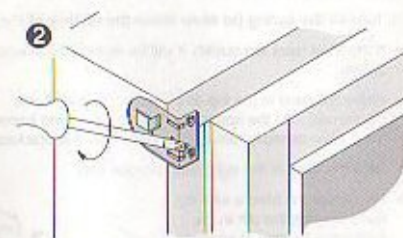


Instructions for fixing a Standard Blind

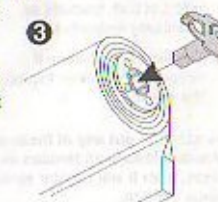
- 1) Lay the blind on a flat surface such as a table top.
 - Slide the small plastic inner pin into Bracket B and push into the right hand side of the roller tube (see Fig. 7)
 - Locate the spring mechanism at the left hand edge of the roller tube into Bracket A and insert the drive pin.
 - With both brackets held firmly in the roller tube assembly, measure the distance from the outside of the left hand bracket to the outside of the right hand bracket.
 - Add 2mm (1/8") tolerance to this dimension to give the required distance between the outside edges of both brackets.
 - Measure the fixing area accordingly and mark the position of Bracket A.
 - Remove the roller tube from both brackets



- 2) Fix bracket A using the screws supplied. (see Fig 2)

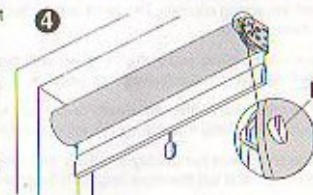


- 3) Mark the position of Bracket B, ensuring that it is exactly horizontal with the left hand bracket.
- 4) Fix Bracket B using the screws supplied making sure both brackets are level.
- 5) Remove the small plastic inner pin from Bracket A and insert it into the right hand end of the roller tube assembly. (see Fig 3)



- 6) Carefully holding the roller blind at both ends lift it up to the brackets and insert the left hand end into Bracket A.
- 7) Slide the square plate of the plastic pin into Bracket B until the locating button (K) clicks into the hole at the front of the bracket (see Fig 4).

Always ensure this button on the locating plate is firmly located in the hole otherwise the blind may fall down.

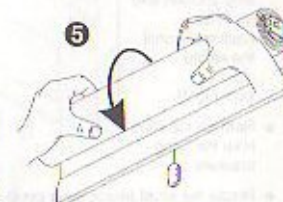


- 8) To remove the blind, push the locating button K out of the hole with the tip of your finger or using the blade of a small screwdriver and then slide the whole assembly out of the bracket.

SETTING THE SPRING TENSION & INITIAL STOP POSITION

Once the blind is fitted it is necessary to carry out the following procedure to set the spring tension to operate the blind and the stop position to control how much it rises.

- 1) Pull the blind down slowly until a small amount of resistance can be felt.
- 2) Lower the blind a further 15cm (6"). Hold it at that point and let it rise fractionally until it becomes fixed. Now cease holding the blind.



- 3) Take the blind out of the brackets. (see fixing step 8)
- 4) By hand roll up the fabric until it is approx. 15cm (6") from the top of the roller (see Fig. 5).
- 5) Hold the roller tube firmly and rotate the small plastic inner pin in the right hand end of the roller assembly in a clockwise direction until it will not turn any more (see Fig. 6). Refit the blind in the brackets, slightly unwinding the inner pin if necessary to align with Bracket B.

- 6) Pull the blind down to its lowest position as described in (2) above. Wait approximately one minute for the mechanism to fully react and then raise the blind by slightly pulling down until it releases.
- 7) Dependent on the size of the blind, it may be necessary to repeat the lowering and rolling up procedure until it rises by itself.
- 8) In time it may be necessary to repeat the tightening of the spring due to loss of tension which can occur. Please therefore keep these instructions in a safe place for future reference.

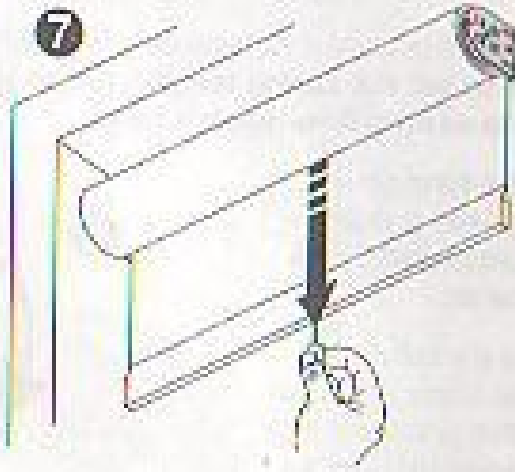


Please note that the larger the blind size or the heavier the fabric the more tension that is required on the spring. It may therefore take several adjustments to achieve the necessary tension for the spring to operate efficiently throughout its life.

ADJUSTMENTS

A) To lower the stop position

- Lower the blind to the required stop position and let it rise fractionally until the spring catches. (see Fig 7).
- Remove the blind from the fixing brackets.
- Rotate the small plastic inner pin clockwise until it will not turn anymore (see Fig. 6).
- Replace the blind in the brackets as previously described.



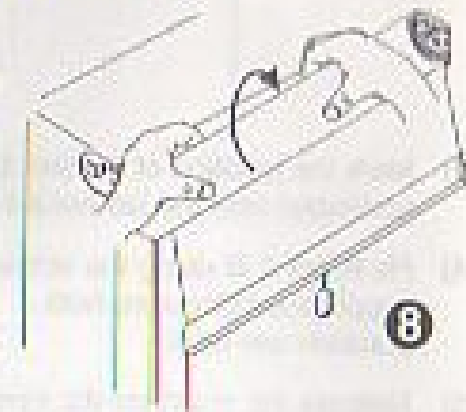
3) To raise the stop position

- First LOWER the blind approx. 2.5cm (1") as described above before removing it from the brackets.
- Roll up the fabric by hand on the roller to the required new stop position.
- Rotate the small plastic inner pin in a clockwise direction, until it will not turn any more (see Fig 6).
- Replace the blind in the brackets as previously described.

ADJUSTMENTS CONTINUED . . .

D) To loosen the spring (to slow down the raising of the blind)

- If the blind rises too quickly it will be necessary to loosen the spring.
- Raise the blind to the top stop position and let it rise fractionally until the spring catches and the blind becomes fixed. Now carefully remove the blind from the brackets.
- Relit the blind in the right hand bracket only.
- Now lower the blind a little by hand keeping the pin in the right hand bracket at all times (see Fig. 8).
- Remove the blind from the right hand bracket and then relit it in both brackets as previously instructed.
- Repeat the procedure if necessary to further loosen the spring.



When carrying out any of these adjustments, if the spring mechanism loses all tension as the blind is removed from the brackets, then it will require **re-setting** as described in the previous section.

OPERATION OF THE BLIND

The roller blind can be stopped in any position throughout its drop within a 2.5cm (1") tolerance.

Lower to the required height, then let it rise fractionally under control