



window styling



Guarantee, Installation and Operating Instructions  
Luxaflex® Duette® & Plissé Blinds  
Roof Models



# Guarantee, Installation and Operating Instructions Luxaflex® Duette® & Plissé Blinds Roof Models

Dear Customer,

We thank you for choosing Luxaflex® products. In the unlikely event that the Luxaflex product guarantee service is needed, please contact the dealer from whom the product was purchased. Alternatively you may contact a member of our authorised Luxaflex® service network. In order to minimise any unnecessary inconvenience, we suggest that the product installation instructions are read carefully before contacting the dealer on our service network.

## GUARANTEE

Luxaflex® guarantees that all Luxaflex® window covering products are free from material and assembly defects, provided that such products were properly installed in a domestic situation. For non-domestic installations, refer to the Luxaflex® general sales conditions. The obligation of Luxaflex® is limited to repair or replacement of the defective materials or components. Repairs will be made with like or similar parts. The guarantee is limited to the original purchaser.

Scope of warranty	Year since date of purchase				
	1 yr	2 yrs	3 yrs	4 yrs	5 yrs
Removal of product from end user's window	X	X	X	X	X
Carriage (to - from factory)	✓	X	X	X	X
Labour (assembly / repair)	✓	X	X	X	X
Re-installation of product at end users window	X	X	X	X	X
Components (with like or similar parts)	✓	✓	✓	✓	✓
Cords	✓	✓	✓	X	X
Fabric (with like or similar fabric)	✓	✓	✓	X	X
Consequential loss	X	X	X	X	X

This guarantee is invalid if the damage or failure is caused by:

- Accident • Misuse/Abuse • Alteration • Motorised devices • Exposure to elements
- Normal wear and tear • Blinds that are not fitted in a domestic situation.
- Failure to follow measurement, installation, cleaning and maintenance instructions

The guarantee is exclusive and in lieu of all other obligations, liabilities or warranties. In no event shall Luxaflex be liable or responsible for incidental or consequential damages or for any other direct or indirect damage, loss, cost, expense or fee.

The guarantee does not affect the consumers statutory rights under applicable national laws in force, nor the consumers rights against the dealer arising from their sales/purchase contract.



WARNING!

Please ensure any loose hanging cord loops are kept out of reach of children. To receive a free safety tie cleat please call:

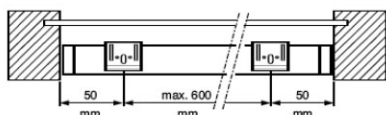
0161 442 9500

Thank you for purchasing this Luxaflex® quality product. Please read and follow these installation and operating instructions carefully. We cannot accept responsibility for problems caused by not adhering to the instructions.

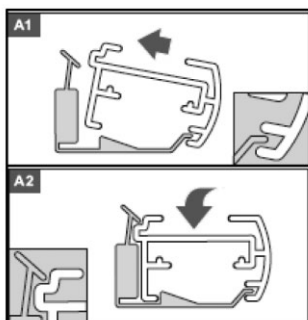
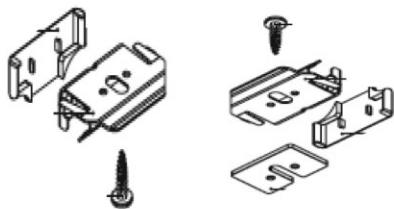
## RECTANGULAR ROOF BLINDS

### Installation of Standard Brackets

1. Mark the positions of the brackets on the window frame. Make sure that the mounting position has secure fixings and that the position chosen for the blind will not interfere with such things as window handles etc.

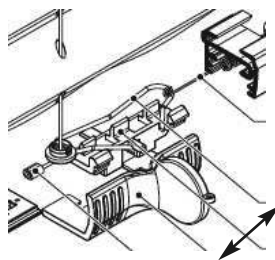


- 2a. Fix the brackets with the screws supplied, either face or top fixing as necessary. 11° packing wedges are supplied, which can be used to pack out the bracket so that it can be fitted to sloping frames.



- 2b. Install headrails with sliding tensioners in a similar manner to the headrail as shown in point 2a, but you will need to fit with a minimum of one packing shim behind each bracket to allow for the sliding tensioners.

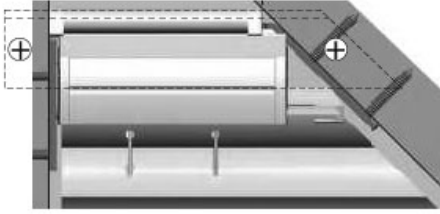
3. Adjusting the cable tension. It is easy to adjust the tension using the red adjusting handle supplied. Place it over the tensioner in the rail and slide it left to right. One direction will increase the tension and the other will decrease the tension. After adjustment the handle can be removed and kept in a safe place for future use. Repeat this process for however many tensioners on your blind.



4. The operating cords are also tied off to a sliding tensioner and can be adjusted in the same way, to create the optimum tension to hold the blind in place without being too much to make it stiff to operate.

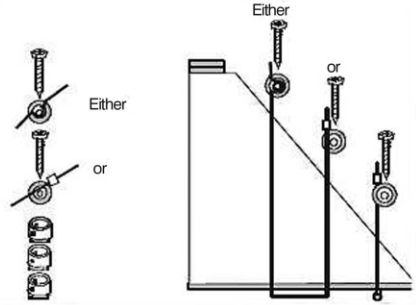
### APEX ROOF BLINDS

5. Install brackets for the base rail of the blind in the same fashion as 2b for rectangular roof blinds, making sure to fit with a packing shim behind each bracket to allow for the sliding tensioners.
6. For the apex rail you will have been supplied 2 face fit angle brackets and a length of 30x30mm angle. If face fitting below the glazing bars, the angle can be cut to length and shape and then drilled and screwed to the glazing bars. The headrail fixing brackets can then be attached to the angle, either with self tapping machine screws supplied or pop riveted. If fitting in recess, the two angle brackets will need to be fitted and bent to the angles of your recess. These can be attached to the angle, which can then have the headrail brackets attached to it, or the headrail brackets can be attached directly to the angle brackets.



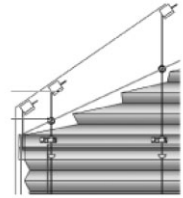
### 7. Side Tension cables on Apex Roof blinds

Before fitting the side tension cables, it is advisable to make sure all blinds are spaced equally. Depending on the width of your blind it may have side tension cables that support the fabric. These need to be attached to the glazing bar along the sloping edge of your blind. This can be done with mounting cup fittings supplied. If fitting inside recess, only one fitting will be required per cable. If fitting on face, several fittings should be connected together to create “a post” sufficiently high enough to give clearance for the fabric to pass over the glazing bar. Feed screw through so that cable is wrapped around the screw. Feed screw through as many tension cable fixings as required to give clearance and screw down until cable is gripped. Loosen screw as necessary and pull cable through until slack is removed (do not over tension cable) and retighten. Before cutting off excess cable, check that the cables are not pulling at an angle and distorting the fabric. If they are you may be able to adjust this by rotating the tension cable fixing, which will approximately a 10mm variance. If this is insufficient, you will need to move and refix the tension cable fixing. It can be a good idea to fit a crimp (supplied) to the cable to prevent the cable pulling back through the fixing (if these are fitted the cable can be passed straight through the fixing without being wrapped around the screw)



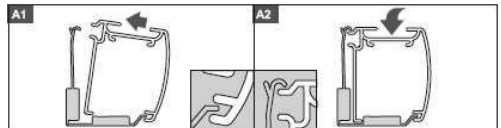
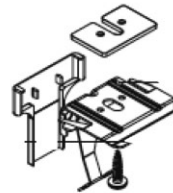
### 8. Trapezoid Apex models

These models require tension cords for the middle rails to hold it in position. You will find a cord tied to a plastic washer exiting the middle rail on the opposite side to the apex rail. This needs to be secured to the glazing bar in a similar fashion to the side tension cables, using the mounting cup fittings supplied. Make sure that the position it is fitted allows enough clearance for the rail to meet it and also that the cord is in line. All other fixing is the same as a standard apex roof blind.



### ENDLESS CHAIN, CRANK OR ELECTRIC BLINDS

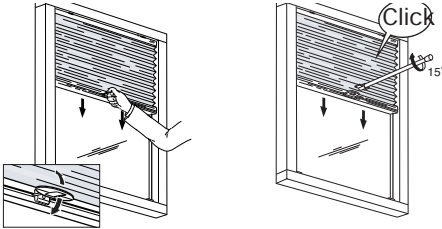
Fitting of blinds with these operations is carried out in the same fashion, but the base rails of the blinds will be made with our XL rail and will therefore need to be fitted with XL bracket:



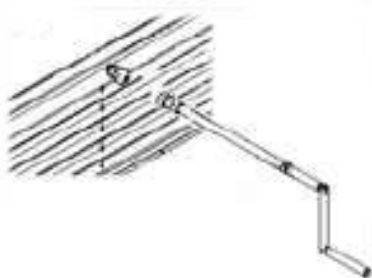
## OPERATION

The blind can be operated in several ways, depending on your chosen method:

- 9a. Hand operated -The blind can be raised or lowered by pulling on the handle, the blind will stay in position wherever you stop pulling.
- 9b. Wand operated - For higher level installations a detachable wand can be used. The handle angle can be adjusted to a suitable angle by clicking it up or down on it's ratchet mechanism. Locate the wand fitting onto the handle, rotating the wand in a clockwise direction will lock it onto the handle. Push the blind up or down to the desired position with the wand. Rotate the rod in an anticlockwise direction to remove it from the handle.



10. Endless chain operated - Pulling the cord or chain in one direction will lower the blind and the opposite direction will raise the blind. Holding both the front and back of the chain tight whilst operating will ease operation.
11. Crank Rod or Powerdrive operated Locate the operating rod onto the ball fitting of the blind. Turning the rod one way will close the blind, the other way will open the blind. With Powerdrive, pushing the switch in either direction will operate the blind.



## MAINTENANCE

Pleated blinds should be stacked overnight once a week to help maintain pleating.

The fabric of both Duette® or Luxaflex® Plissé blinds cannot be separated from the headrail. To prevent the Duette® or Plissé fabrics from becoming dirty, the blinds should be cleaned regularly with a feather duster or vacuum cleaner on a low setting. Stains should be removed as quickly as possible with a soft sponge and lukewarm water containing a non-synthetic detergent, if required. N.B. Duette® and Plissé fabrics with metalised coatings should NOT be cleaned with water, as this could damage the coating. In order to clean the whole blind, it is possible to submerge non-metalised coated Duette® or Plissé in a bath, but in the case of roof blinds, not the headrails. This does not apply to Blackout fabrics. Proceed as follows: Fill a container, bath or basin with lukewarm water (30°) and add a non-synthetic detergent, one cap full per litre water. Lay the fabric in the water and hold the headrail above the water. The cleaning result will be better if the pleats are not held in the water as a stacked bundle, but in an open position. Prevent creasing or deforming the fabric or pleats. Use a soft sponge or brush on the fabric to clean any stains. Do not leave the fabric in the water for longer than two hours. Hang the fabric out fully over the bath and spray clean it, front and back, to ensure that dirt and soap residue is removed from the fabric. Pull the fabric up carefully and ensure that the pleats fold correctly. Once the bundle of material has completely been folded together, squeeze the head and bottom rail together, which will wring as much water out of the fabric as possible. Remount the blind into it's brackets, and allow the blind to drop completely. You can try again to remove any stubborn stains or residue with a slightly damp sponge. Now raise the blind to approximately 300mm below the headrail. Raise the fabric once every hour and then allow to drop fully, before raising it again to 300mm below the headrail. Repeat this cycle until the fabric is dry. If the shade is wider than the bath at your disposal, you can clean the fabric with a soft sponge or have it cleaned by a professional cleaning service.

*Disclaimer The above recommendations have been drawn up with care. However, we are unable to accept responsibility for the results of cleaning.*



window styling

**HunterDouglas Ltd.** Window Fashion Division  
Mersey Ind. Est., Heaton Mersey, Stockport, Cheshire SK4 3EQ.  
Tel: 0161-442 9500 Fax: 0161-432 3200.