



Luxaflex[®]

window styling



5
year

Luxaflex[®]
Guarantee

Guarantee, Installation and Operating Instructions
Luxaflex[®] Duette[®] & Plissé Blinds
Freehanging Models

Including Top-Down- Bottom-Up Model 3242 & Model 120



Guarantee, Installation and Operating Instructions Luxaflex® Duette® & Plissé Blinds Freehanging Models

Dear Customer,

We thank you for choosing Luxaflex® products. In the unlikely event that the Luxaflex product guarantee service is needed, please contact the dealer from whom the product was purchased. Alternatively you may contact a member of our authorised Luxaflex® service network. In order to minimise any unnecessary inconvenience, we suggest that the product installation instructions are read carefully before contacting the dealer on our service network.

GUARANTEE

Luxaflex® guarantees that all Luxaflex® window covering products are free from material and assembly defects, provided that such products were properly installed in a domestic situation. For non-domestic installations, refer to the Luxaflex® general sales conditions. The obligation of Luxaflex® is limited to repair or replacement of the defective materials or components. Repairs will be made with like or similar parts. The guarantee is limited to the original purchaser.

Scope of warranty	Year since date of purchase				
	1 yr	2 yrs	3 yrs	4 yrs	5 yrs
Removal of product from end user's window	X	X	X	X	X
Carriage (to - from factory)	✓	X	X	X	X
Labour (assembly / repair)	✓	X	X	X	X
Re-installation of product at end users window	X	X	X	X	X
Components (with like or similar parts)	✓	✓	✓	✓	✓
Cords	✓	✓	✓	X	X
Fabric (with like or similar fabric)	✓	✓	✓	X	X
Consequential loss	X	X	X	X	X

This guarantee is invalid if the damage or failure is caused by:

- Accident • Misuse/Abuse • Alteration • Motorised devices • Exposure to elements
- Normal wear and tear • Blinds that are not fitted in a domestic situation.
- Failure to follow measurement, installation, cleaning and maintenance instructions

The guarantee is exclusive and in lieu of all other obligations, liabilities or warranties. In no event shall Luxaflex be liable or responsible for incidental or consequential damages or for any other direct or indirect damage, loss, cost, expense or fee.

The guarantee does not affect the consumers statutory rights under applicable national laws in force, nor the consumers rights against the dealer arising from their sales/purchase contract.

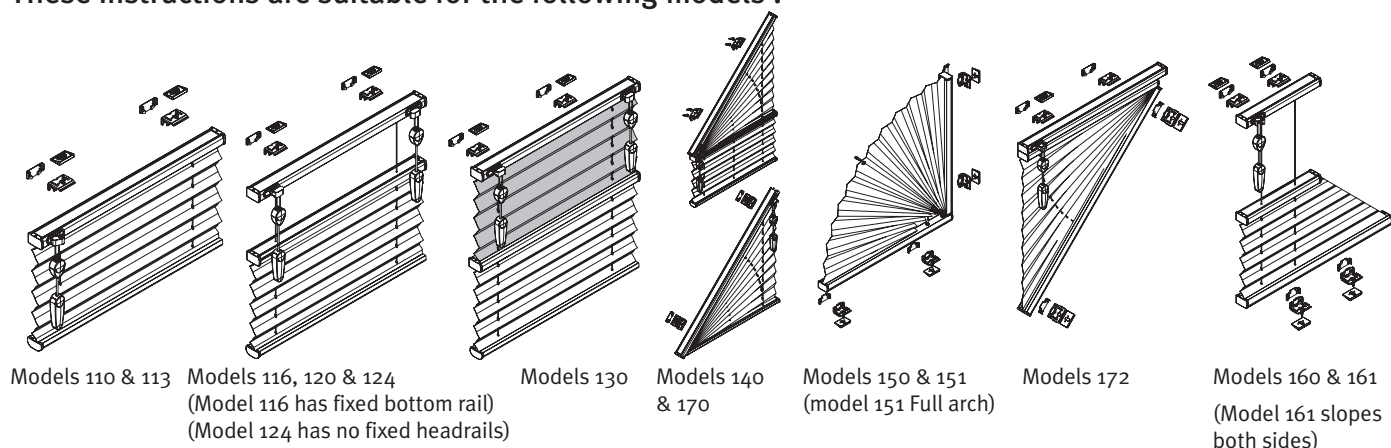
Thank you for purchasing this Luxaflex® quality product. Please read and follow these installation and operating instructions carefully. We cannot accept responsibility for problems caused by not adhering to the instructions.

Installation and Operating Instructions for Freehanging Pleated Blinds

Please read the following instructions thoroughly before commencing installation:-

- Do not damage the product when using a sharp knife to open the packaging !
- Fitting screws: use a size 2 screwdriver, or use a 3.6v electric screwdriver at it's lowest torque.
- Rail removal: use a flat blade screwdriver
- It is recommended that you use the screws supplied for fitting to prevent malfunction from using screws with too large heads.
- There is a possibility that this product may not reach the required drop when lowered initially. This is usually caused by the tight compression of the pleats during transit. Whilst the blind, if left hanging would normally fall to its required drop over a short period of time, the following action could help speed up the process. To relax the pleats and enable them to drop fully, we recommend the following course of action:-
- Lower the blind as far as it will drop
- Gently 'work' the pleats open in a downward fashion (from the top of the blind either side down) The blind should now reach the desired drop.

These instructions are suitable for the following models :



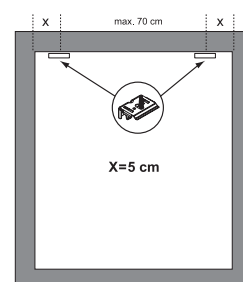
Fittings Supplied :

Blind width	Number of parts		
0 - 80 cm			
81 - 150 cm			
151 - 220 cm			
221 - 230 cm			

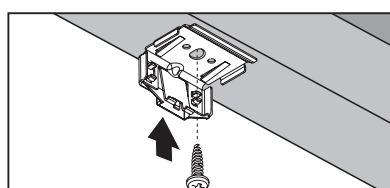
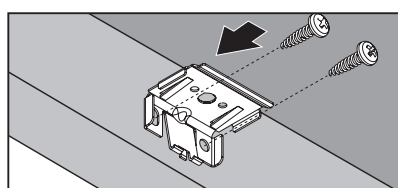
Recommended Bracket Positions :

(For models with fixed rails at the bottom or sloping rails, the same distance dimensions should apply)

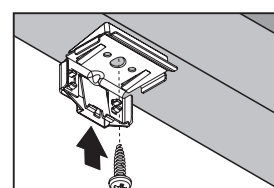
If your fixing surface is uneven, packing shims are supplied which can be positioned above the brackets to level the headrail.



Bracket Face Fitted Bracket Top fitted



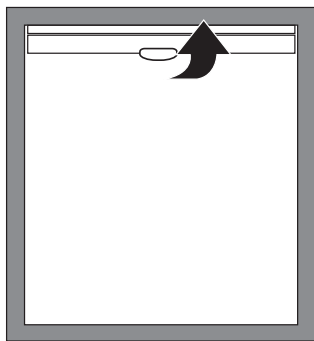
Interlockable packing shims and back covers are supplied if top fixing



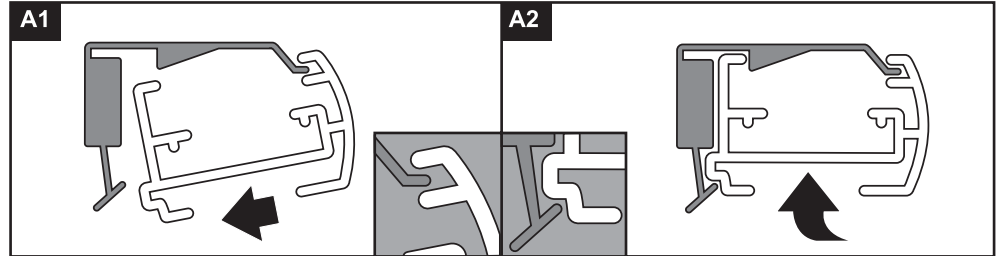
11° wedges are supplied and can be built up to fit to angled frames up to 45°

For models with fixed rails, such as Model 116 at the bottom or at the side these brackets are fitted in the same way, but either sideways or upside down. These types of blind may have tensioned cords, which means the rail may need to be forced down to reach the brackets.

Install headrails onto brackets as shown below:

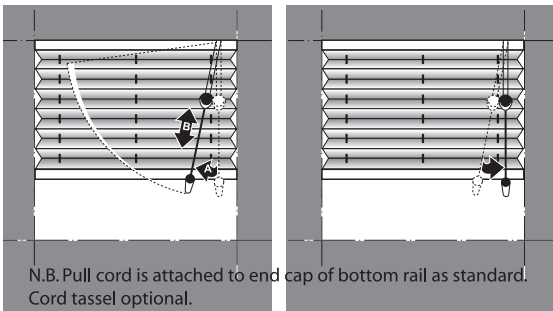


Locate headrail onto lip of bracket (A1), push headrail up at rear until it 'clicks' into place fully (A2)



Cord Operation:

Pull cords towards centre of blind to release cord lock
 Pull cords towards edge of blind to lock.



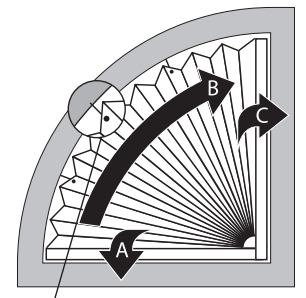
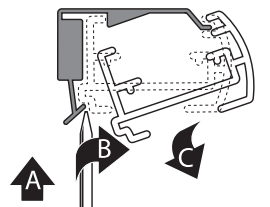
Blind Removal:

To release rail, use flat blade screwdriver to prise back of bracket off rail. Twisting may assist.

Arched Models:

Positioning the holes to be drilled for the fastening hook(s)

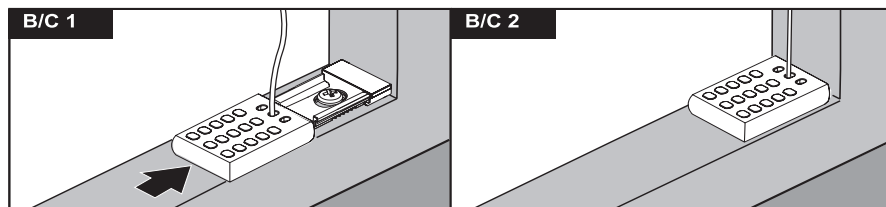
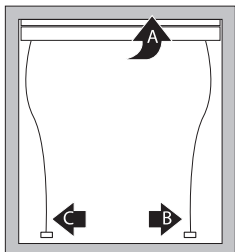
- Click the pleated blind into place with the lower rail and unfold it all the way
- Mark the hole positions on the frame, in line with the eyes in the fabric. (Not on Duette®)
- Remove the pleated blind, drill the holes, install the screw hooks. With Duette® you will receive arch support clips, locate back of pleat between the two 'fingers' to support fabric
- Install the rails and the blind as shown in diagram



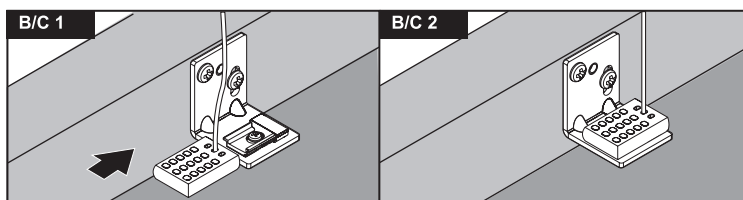
Options:

Side Guiding SG1 or Hand control Models:

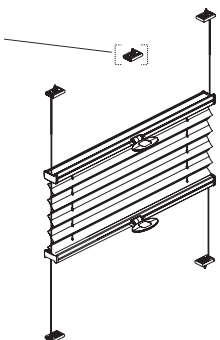
Install headrail first Then install mounting plates by screwing inner section to sill then slide cover onto inner as shown below, tensioning the cords in doing so.



Mounting plates can be face fitted by using wall support brackets

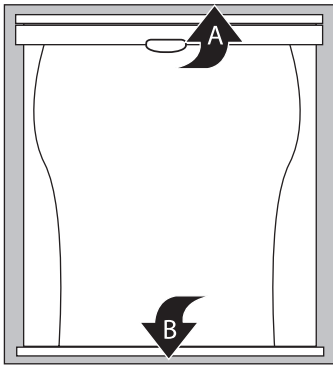


N.B. For MODEL 124 – There are NO headrails on this model, therefore you will fit mounting plates in all 4 corners as above.

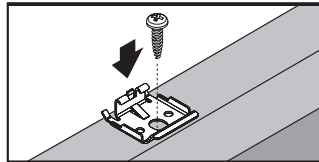


Side Guiding SG2:

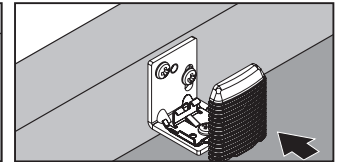
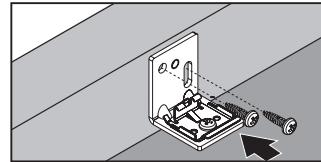
Install Headrail first then bottom Fixed rail.



Screw brackets to sill

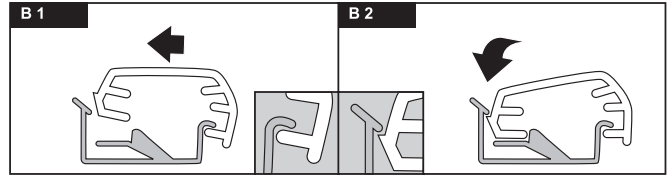


Use Wall support bracket if face fitting

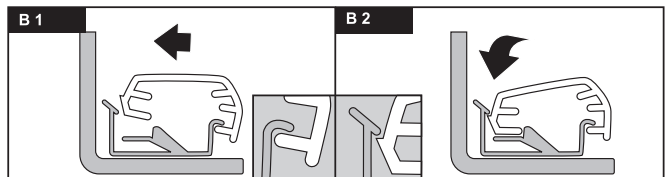


Mounting fixed rail to brackets:

Sill fix

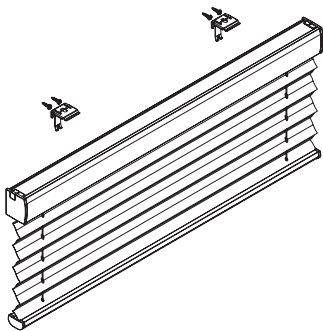


Face fix

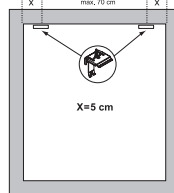


Endless Cord, Endless Chain or electric Models

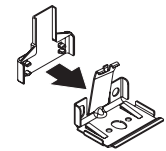
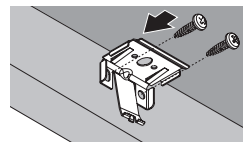
Models with these control options are fitted with our larger XL rail and therefore have different headrail brackets:



Blind width	Number of parts		
0-80 cm	2	2	2
81-150 cm	3	3	3
151-220 cm	4	4	4
221-230 cm	5	5	5

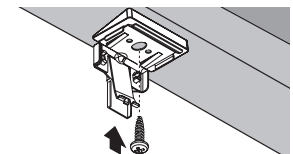
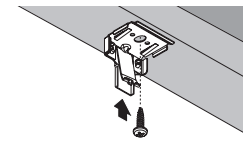


Bracket Face Fitted



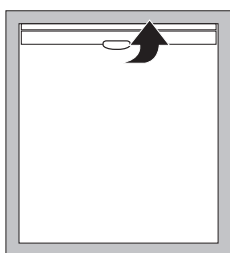
If top fitting bracket covers are supplied

Bracket Top fitted

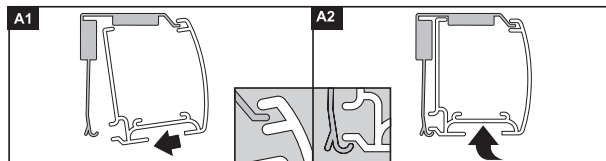


11° wedges are supplied and can be built up to fit to angled frames up to 45°

Install headrails onto brackets as shown below:

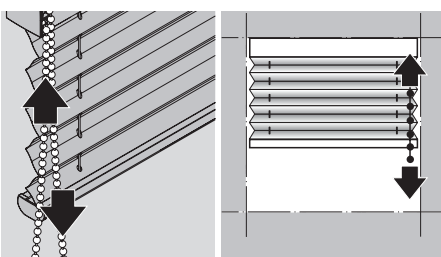


Locate headrail onto lip of bracket (A1), push headrail up at rear until it 'clicks' into place fully (A2)



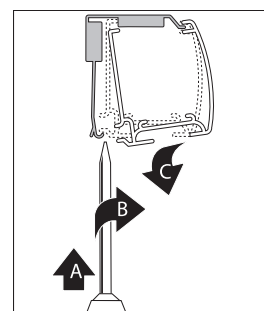
Operation:

Pulling front cord/ballchain will raise blind
 Pulling back cord/ballchain will lower blind
 Holding cord/chain back and front will ease operation



Blind Removal:

To release rail, use flat blade screwdriver to prise back of bracket off rail. Twisting may assist



24 v Motorised Blinds:

Connection: The built-in motor (24 V DC) with automatic end position adjustment may only be connected to the 230V mains using a stabilized 24 Volt DC Power Supply.

Only use Power Supplies and controls recommended by the manufacturer of the Pleated Blind, to prevent damage or malfunctioning caused by non-compatible electric components!

When connecting electric components, the wiring diagrams provided by the manufacturer must be observed. If you haven't received a wiring diagram, please contact your supplier.

MAINTENANCE:

It is recommended that Pleated blinds should be stacked overnight, at least once a week, to help retain their pleating and shape.

The fabric of both Duette® or Luxaflex® Plissé blinds cannot be separated from the headrail. To prevent the Duette® or Luxaflex® Plissé fabrics from becoming dirty, the blinds should be cleaned regularly with a feather duster or vacuum cleaner on a low setting. Stains should be removed as quickly as possible with a soft sponge and lukewarm water containing a non-synthetic detergent, if required.

N.B. Duette® and Luxaflex® Plissé fabrics with metalised coatings should NOT be cleaned with water, as this could damage the coating.

In order to clean the whole blind, it is possible to submerge non-metalised coated Duette® or Luxaflex® Plissé in a bath. This does not apply to Blackout fabrics. Steel weights should be removed from the bottom rail, which can be accessed by removing bottom rail end caps and cover profile, before washing.

Proceed as follows:

Fill a container, bath or basin with lukewarm water (30°) and add a non-synthetic detergent, one cap full per litre water. Lay the fabric in the water and hold the headrail above the water. The cleaning result will be better if the pleats are not held in the water as a stacked bundle, but in an open position. Prevent creasing or deforming the fabric or pleats. Use a soft sponge or brush on the fabric to clean any stains. Do not leave the fabric in the water for longer than two hours. Hang the fabric out fully over the bath and spray clean it, front and back, to ensure that dirt and soap residue is removed from the fabric.

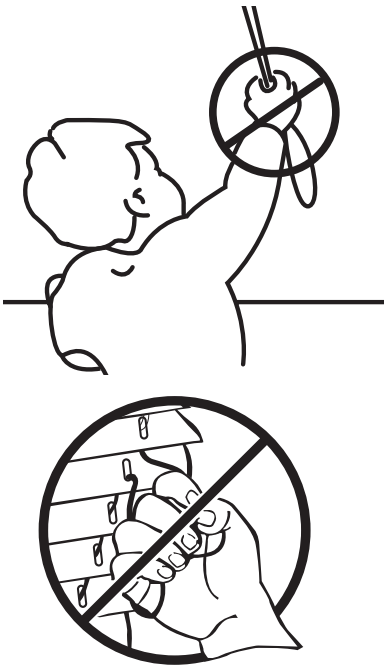
Pull the fabric up carefully and ensure that the pleats fold correctly. Once the bundle of material has completely been folded together, squeeze the head and bottom rail together, which will wring as much water out of the fabric as possible. Replace the steel weights in the bottom rail. Remount the blind into its brackets, and allow the blind to drop completely. You can try again to remove any stubborn stains or residue with a slightly damp sponge. Now raise the blind to approximately 300mm below the headrail.

Raise the fabric once every hour and then allow to drop fully, before raising it again to 300mm below the headrail. Repeat this cycle until the fabric is dry. If the shade is wider than the bath at your disposal, you can clean the fabric with a soft sponge or have it cleaned by a professional cleaning service.

Disclaimer:

The above recommendations have been drawn up with care. However, we are unable to accept responsibility for the results of cleaning.

! WARNING

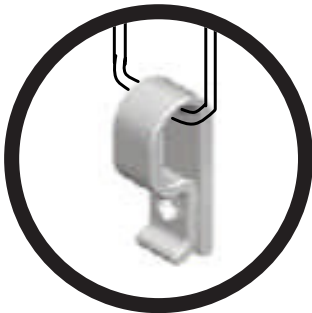


- Young children can STRANGLE in the loop of pull cords, chains and tapes and cords that operate window coverings. They can also wrap cords around their necks.
- To avoid strangulation and entanglement, keep cords out of the reach of young children.
- Move beds, cots and furniture away from window covering cords.
- Inner cords can pull down to form a loop, which can STRANGLE a young child.

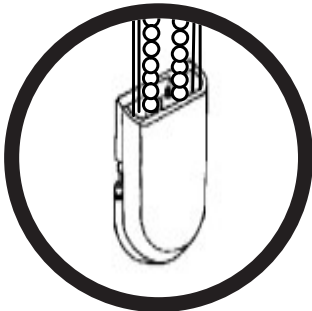
CORD SAFETY DEVICE



Cord Cleat
- supplied with products having single pull cord



**Endless cord/
Chain retainer**
- supplied with products having endless chain or cord



**Double chain &
cord retainer**
- supplied with vertical louvre blinds having both endless cord and chain

Fitting

- First, ensure blind has been installed as per instructions.
- Select suitable position to fit appropriate retainer. If cord & cleat, making sure it is out of reach of children. If one of the cord/chain retainers, fit at position for length of chain/cord. Fit so that the retainer takes out slack but without over tightening.
- Mark and fix the retainer using the fixing provided. Check that a secure fixing has been achieved.
- In the case of single pull cord products, make sure cords are tied out of reach each time used.

Persons in charge of children are ultimately responsible for following the safety instructions provided by the manufacturer.



window styling

HunterDouglas Ltd. Window Fashion Division
Mersey Ind. Est., Heaton Mersey, Stockport, Cheshire SK4 3EQ.
Tel: 0161-442 9500 Fax: 0161-432 3200.